

General Info

What is it?

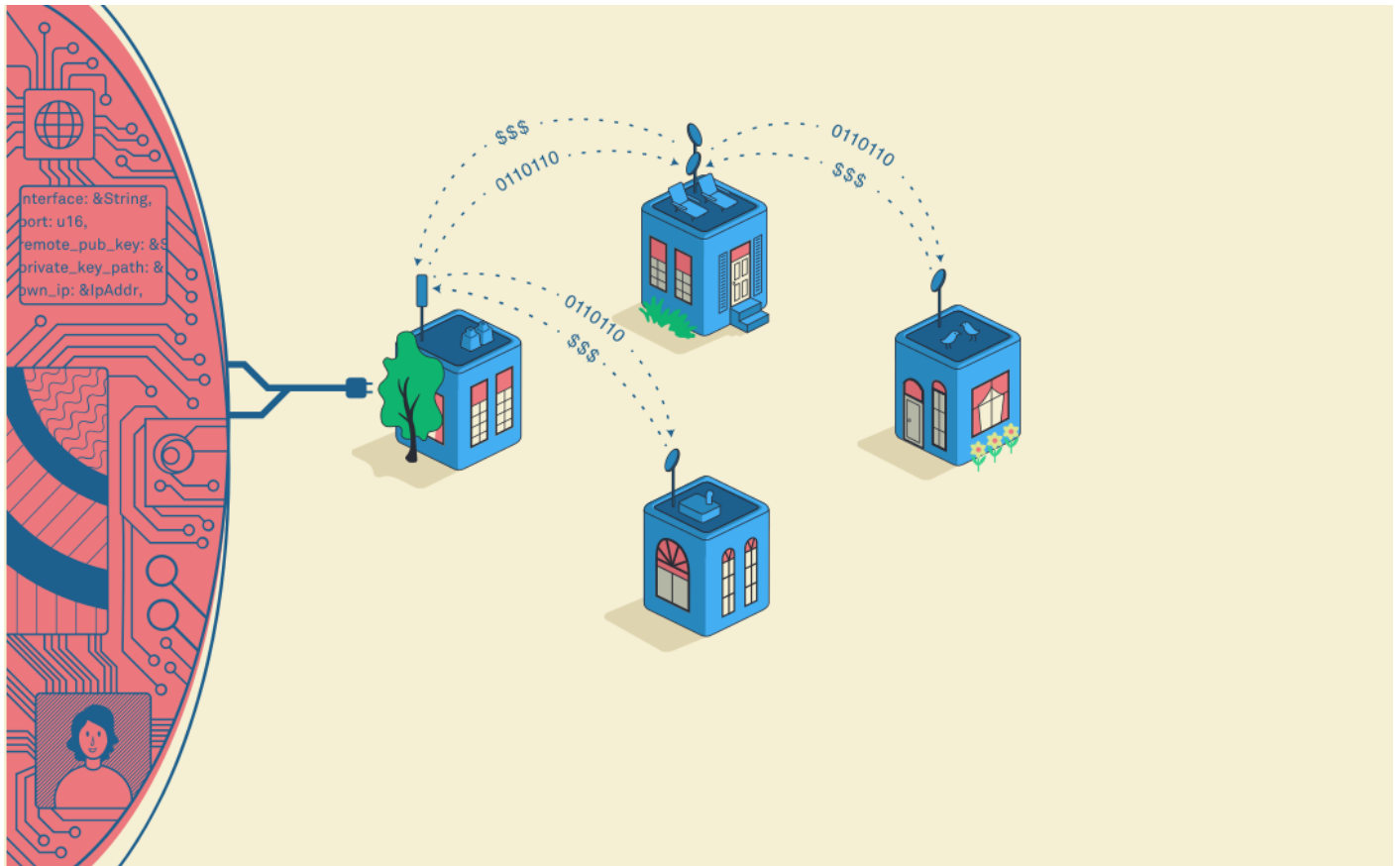
WillaMesh is a community mesh network in Lane County, Oregon. A community mesh network enables local residents and businesses to work cooperatively to provide high-quality Internet access and broadband connectivity to their communities, without the data caps, restrictions, and sky-high costs of Internet Service Provider monopolies.

Who needs it?

In our society, everyone needs Internet access and digital literacy. Most communities have only a single choice for Internet. Lack of choice means slow speeds, horrible support, and high prices that can get higher at any time, without warning. Even worse, many low-income and rural communities have no home Internet options and are forced to use mobile phones to get online.

How does it work?

1. WillaMesh places a small antenna outside your house or apartment, and a Wi-Fi router running Althea software inside to connect your devices. Using a credit card, you load up your router with digital currency to pay for access.
2. Your router talks to one or more relays in your neighborhood and pays them for bandwidth.
3. Relays send traffic to the WillaMesh gateway and the Internet.
4. Anyone can grow the network by becoming a relay. Connect your neighbors and make a little bit of money at the same time!



What does it cost?

Most folks pay between \$30 and \$50 per month. There are no contracts or confusing packages. You only pay for what you use! Equipment and installation typically runs \$150 to \$200. For more details about our pricing models, see [the need for speed](#).

Who are you?

We are friendly neighborhood nerds that think everyone should have good Internet without paying an arm and a leg! Check out our ["who we are"](#) page for our bios.

For more info

Here are some pointers to documents/pages with more detail based on specific areas of interest:

You are...	Check out...
Looking for info about the hardware to connect	WillaMesh Equipment

Can't find what you're looking for?

If you have specific questions, please reach out to us! You can email connectme@willamesh.net or call/text us at 541-321-6374 (541-321-MESH).

Revision #15

Created 30 August 2020 08:17:14 by Michael Barrow

Updated 20 September 2020 22:48:45 by Michael Barrow