

WillaMesh

Community-powered broadband™

- [General Info](#)
- [Who we are](#)
- [Commercial & MDU Property Owners/Managers](#)
 - [Commercial & MDU Properties](#)
 - [Equipment Specifications](#)
- [The need for speed](#)
- [WillaMesh Equipment](#)
- [Privacy Policy](#)

General Info

What is it?

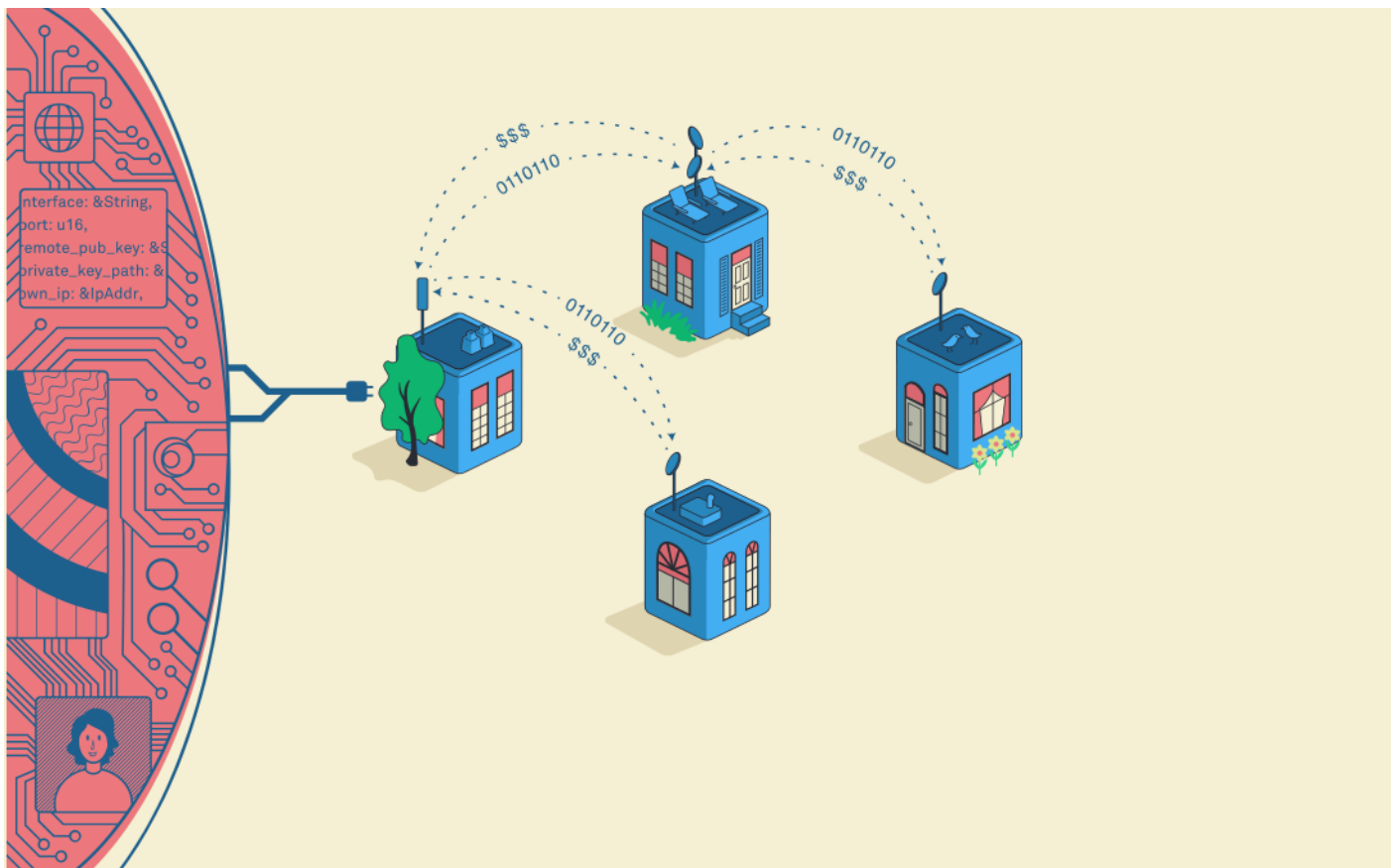
WillaMesh is a community mesh network in Lane County, Oregon. A community mesh network enables local residents and businesses to work cooperatively to provide high-quality Internet access and broadband connectivity to their communities, without the data caps, restrictions, and sky-high costs of Internet Service Provider monopolies.

Who needs it?

In our society, everyone needs Internet access and digital literacy. Most communities have only a single choice for Internet. Lack of choice means slow speeds, horrible support, and high prices that can get higher at any time, without warning. Even worse, many low-income and rural communities have no home Internet options and are forced to use mobile phones to get online.

How does it work?

1. WillaMesh places a small antenna outside your house or apartment, and a Wi-Fi router running Althea software inside to connect your devices. Using a credit card, you load up your router with digital currency to pay for access.
2. Your router talks to one or more relays in your neighborhood and pays them for bandwidth.
3. Relays send traffic to the WillaMesh gateway and the Internet.
4. Anyone can grow the network by becoming a relay. Connect your neighbors and make a little bit of money at the same time!



What does it cost?

Most folks pay between \$30 and \$50 per month. There are no contracts or confusing packages. You only pay for what you use! Equipment and installation typically runs \$150 to \$200. For more details about our pricing models, see [the need for speed](#).

Who are you?

We are friendly neighborhood nerds that think everyone should have good Internet without paying an arm and a leg! Check out our ["who we are"](#) page for our bios.

For more info

Here are some pointers to documents/pages with more detail based on specific areas of interest:

You are...	Check out...
Looking for info about the hardware to connect	WillaMesh Equipment

A commercial or MDU property owner/manager interested in connecting your building to WillaMesh

Commercial & MDU Property Owners/Managers

Can't find what you're looking for?

If you have specific questions, please reach out to us! You can email connectme@willamesh.net or call/text us at 541-321-6374 (541-321-MESH).

Who we are

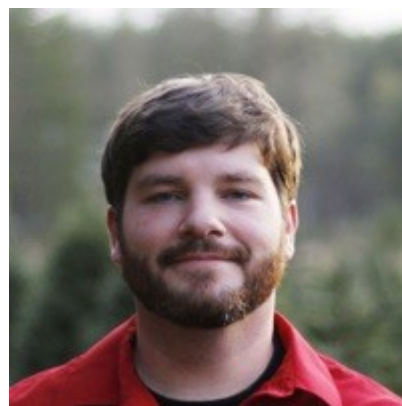
Willamesh was founded by three IT industry veterans who have a passion for using technology to improve people's lives. With more than 60 years' experience in building sophisticated computer systems and web applications, they knew that there had to be a better way to get reliable, low-cost Internet to the masses and set out to bring that dream to fruition.



Michael Barrow
Troublemaker & Crazy Idea Guy
michael@willamesh.net



Ron McCulloch
Dir. of Positivity & Awesomeness
ron@willamesh.net



Aaron Martins
Keeper of Sane Practices
aaron@willamesh.net

Commercial & MDU Property Owners/Managers

Commercial and multiple dwelling unit property owners/managers play a critical role in expanding a community mesh network, by hosting relays and/or extending services to their properties' tenants.

Commercial & MDU Properties

Introduction

Thank you for your interest in partnering with WillaMesh. Internet connectivity and digital literacy are must-haves in modern society. Community-focused broadband initiatives ensure equitable access, as they put control in the hands of the very people the network serves. We sincerely hope that you choose to work with us to make ubiquitous, open, and inexpensive Internet access a reality for the people of Lane County.

What Is WillaMesh?

WillaMesh is an incentivized community mesh network that provides high-quality broadband Internet access, without data caps, restrictions, and high costs typical of Internet Service Provider monopolies.

The company was founded by a trio of IT industry veterans with more than 60 years' experience in building sophisticated computer networks and large-scale web applications. They realized that incumbent providers' offerings were not keeping up with the needs of the community and decided to jump into action to make a change for the better.

What is an incentivized community mesh network?

- Incentivized: Participants who grow the network are compensated.
- Community: The people using the network have a say in how it is expanded.
- Mesh network: Direct connections between participants are encouraged, making the network more resilient against failures, and cheaper and easier to improve over time.

As a property owner, why should I care about this network?

In addition to the intangible benefits from generating goodwill by helping to expand the reach and quality of the network, partnering with WillaMesh provides an additional passive income stream from your property. There are two primary options:

1. Mesh relay: You lease space to WillaMesh to install rooftop radios that provide connectivity to locations in the viewscape of your building. You would be paid up to a 50% share of the revenue from the monthly relay fees associated with traffic that flows through the equipment colocated on your property.
2. Tenant services: You provide equipment space and cabling infrastructure in your property to enable tenants to utilize WillaMesh for Internet services. WillaMesh deploys rooftop radios and equipment to extend the network to tenants. You would be paid a one-time finder's fee for each new installation and up to a 75% share of the revenue from the monthly relay fees for traffic that flows through the equipment colocated on your property.

How does this integrate into my property?

In each deployment scenario, WillaMesh works with your property's management team to install equipment based on the option and the unique requirements of the site. The equipment adheres to industry standards and requires no major construction. A basic installation can be completed within a single day.

Deployment example: mesh relay

A property acting as a relay connects to the WillaMesh gateway (A) via a point-to-point rooftop radio (B) or fiber connection (C). Omni-directional or sector rooftop radios (D) provide connectivity to sites in the vicinity of the property (E). Network equipment (F) located inside the property manages the traffic flow and accounting.

Equipment Specifications

Here is the equipment specifications packet that provides the details of the equipment that may be installed in/on a property.

[Willamesh equipment specifications packet](#)

The need for speed



Where are the packages?

WillaMesh's Internet service does not have speed package bundles. Instead, you pay for each gigabyte of data you use. This pricing model is better for three reasons:

1. It is more fair. People who use more, pay more for that access. But, if you aren't using the network, you don't pay for bandwidth.
2. You are not forced to choose slow speeds in exchange for a cheaper monthly bill.
3. The more people use the network, the more money is available to make the network better.

Doesn't metered service cost more?

If you are worried that you will pay gobs of money with WillaMesh, don't be! Here's some food for thought:

- A typical "cord cutter" household -- one that watches TV via streaming over the Internet only -- in addition to their other Internet access uses 400 gigabytes in a month. At 10 cents per gigabyte, this is just \$40 a month, well under a typical monthly cable subscription bundle.
- WillaMesh has no contracts, so you will not be stuck paying hundreds of dollars a month for an entire year, if not longer.
- WillaMesh does not arbitrarily increase its fees. In our model, if your cost-per-gigabyte goes up, it's because you're getting more service. With traditional providers you end up paying more and more for the same service.

What can I get for 400 gigabytes in a month?

If we use the 400 gig per month figure that a typical "cord cutter" household uses, this is what that looks like:

- Netflix Hi-Def streaming: 178 hours
- Netflix Ultra Hi-Def streaming: 36 hours
- Popular online games: thousands of hours

- Microsoft Flight Simulator 2020: 570 hours
- Zoom one-on-one video meetings: 740 hours for high quality or 247 hours with 1080p quality
- Zoom group video meetings: 493 hours for high quality or 166 hours with 1080p quality

WillaMesh Equipment

Introduction

To connect to WillaMesh, you need a router and an outdoor radio.

The router handles Wi-Fi in your house and is where you connect your computers, phones, game consoles, and set-top boxes that need Internet access. You plug the router's "WAN" port into the cable going to the outdoor radio.

The outdoor radio is mounted outside your house and points at a WillaMesh relay. It is what connects your house to WillaMesh.

Routers

There are two options for routers. Option 1 is recommended for most installs. If your house will be a relay for other sites, then you will need option 2. Your installation advisor will tell you need the option 2 router.

Option 1: Linksys EA6350 (\$50.00)

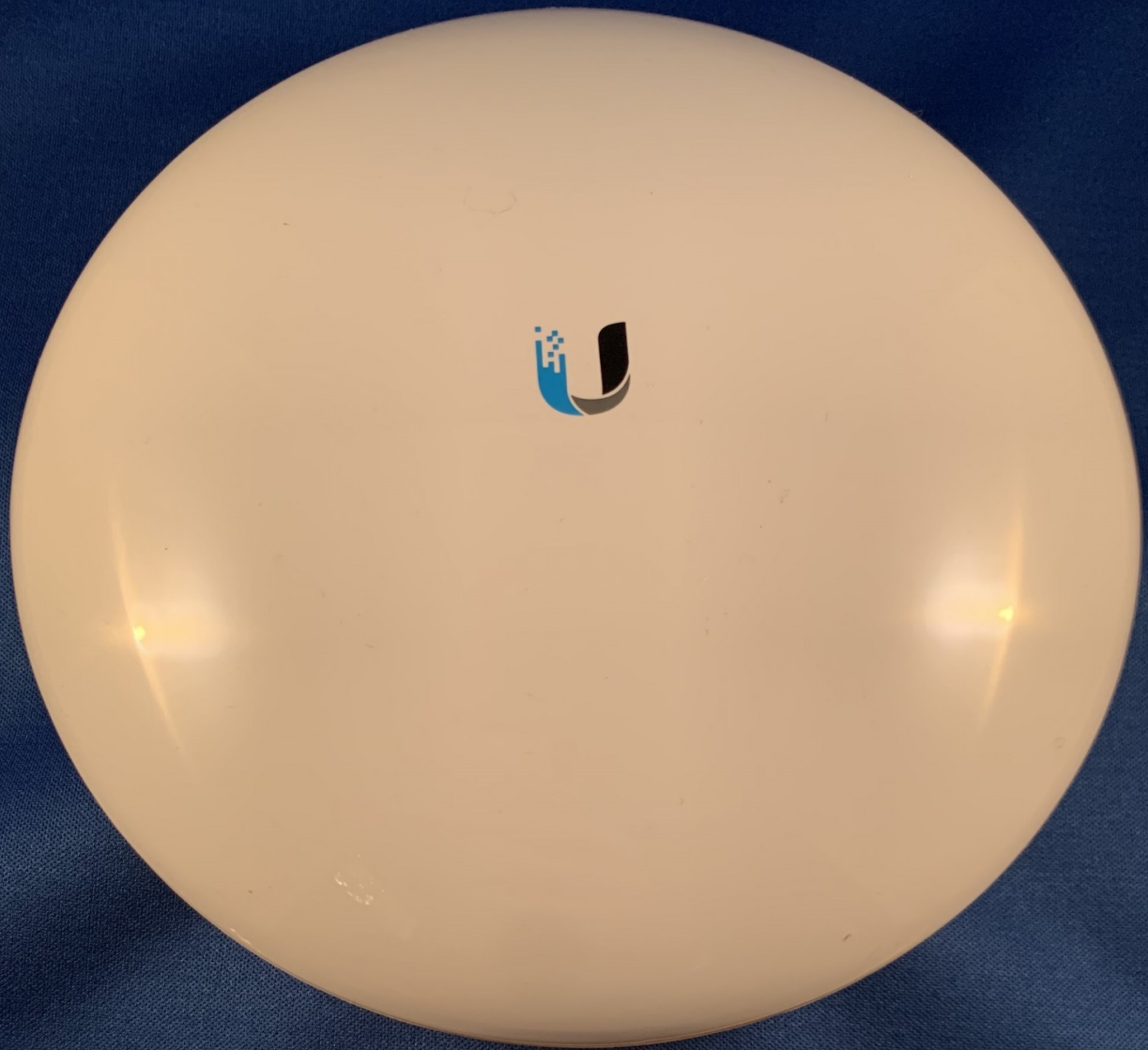


Option 2: Linksys WRT32X (\$200.00)



Outdoor Radio

Ubiquiti NanoBeam (\$90)



Privacy Policy

Willamesh ("us", "we", or "our") operates the <https://willamesh.net> website (the "Service").

This page informs you of our policies regarding the collection, use and disclosure of Personal Information when you use our Service.

We will not use or share your information with anyone except as described in this Privacy Policy.

We use your Personal Information for providing and improving the Service. By using the Service, you agree to the collection and use of information in accordance with this policy.

Information Collection And Use

While using our Service, we may ask you to provide us with certain personally identifiable information that can be used to contact or identify you. Personally identifiable information may include, but is not limited to, your email address ("Personal Information").

We collect this information for the purpose of providing the Service, identifying and communicating with you, responding to your requests/inquiries, servicing your purchase orders, and improving our services.

Log Data

We may also collect information that your browser sends whenever you visit our Service ("Log Data"). This Log Data may include information such as your computer's Internet Protocol ("IP") address, browser type, browser version, the pages of our Service that you visit, the time and date of your visit, the time spent on those pages and other statistics.

In addition, we may use third party services such as Google Analytics that collect, monitor and analyze this type of information in order to increase our Service's functionality. These third party service providers have their own privacy policies addressing how they use such information.

Cookies

Cookies are files with a small amount of data, which may include an anonymous unique identifier. Cookies are sent to your browser from a web site and transferred to your device. We use cookies to collect information in order to improve our services for you.

You can instruct your browser to refuse all cookies or to indicate when a cookie is being sent. The Help feature on most browsers provide information on how to accept cookies, disable cookies or to notify you when receiving a new cookie.

If you do not accept cookies, you may not be able to use some features of our Service and we recommend that you leave them turned on.

Do Not Track Disclosure

We do not support Do Not Track ("DNT"). Do Not Track is a preference you can set in your web browser to inform websites that you do not want to be tracked.

You can enable or disable Do Not Track by visiting the Preferences or Settings page of your web browser.

Service Providers

We may employ third party companies and individuals to facilitate our Service, to provide the Service on our behalf, to perform Service-related services and/or to assist us in analyzing how our Service is used.

These third parties have access to your Personal Information only to perform specific tasks on our behalf and are obligated not to disclose or use your information for any other purpose.

Communications

We may use your Personal Information to contact you with newsletters, marketing or promotional materials and other information that may be of interest to you. You may opt out of receiving any, or all, of these communications from us by following the unsubscribe link or instructions provided in any email we send.

Compliance With Laws

We will disclose your Personal Information where required to do so by law or subpoena or if we believe that such action is necessary to comply with the law and the reasonable requests of law enforcement or to protect the security or integrity of our Service.

Security

The security of your Personal Information is important to us, and we strive to implement and maintain reasonable, commercially acceptable security procedures and practices appropriate to the nature of the information we store, in order to protect it from unauthorized access, destruction, use, modification, or disclosure.

However, please be aware that no method of transmission over the internet, or method of electronic storage is 100% secure and we are unable to guarantee the absolute security of the Personal Information we have collected from you.

International Transfer

Your information, including Personal Information, may be transferred to — and maintained on — computers located outside of your state, province, country or other governmental jurisdiction where the data protection laws may differ than those from your jurisdiction.

If you are located outside United States and choose to provide information to us, please note that we transfer the information, including Personal Information, to United States and process it there.

Your consent to this Privacy Policy followed by your submission of such information represents your agreement to that transfer.

Links To Other Sites

Our Service may contain links to other sites that are not operated by us. If you click on a third party link, you will be directed to that third party's site. We strongly advise you to review the Privacy Policy of every site you visit.

We have no control over, and assume no responsibility for the content, privacy policies or practices of any third party sites or services.

Children's Privacy

Only persons age 18 or older have permission to access our Service. Our Service does not address anyone under the age of 13 ("Children").

We do not knowingly collect personally identifiable information from children under 13. If you are a parent or guardian and you learn that your Children have provided us with Personal Information, please contact us. If we become aware that we have collected Personal Information from a children under age 13 without verification of parental consent, we take steps to remove that information from our servers.

Changes To This Privacy Policy

This Privacy Policy is effective as of August 30, 2020 and will remain in effect except with respect to any changes in its provisions in the future, which will be in effect immediately after being posted on this page.

We reserve the right to update or change our Privacy Policy at any time and you should check this Privacy Policy periodically. Your continued use of the Service after we post any modifications to the Privacy Policy on this page will constitute your acknowledgment of the modifications and your consent to abide and be bound by the modified Privacy Policy.

If we make any material changes to this Privacy Policy, we will notify you either through the email address you have provided us, or by placing a prominent notice on our website.